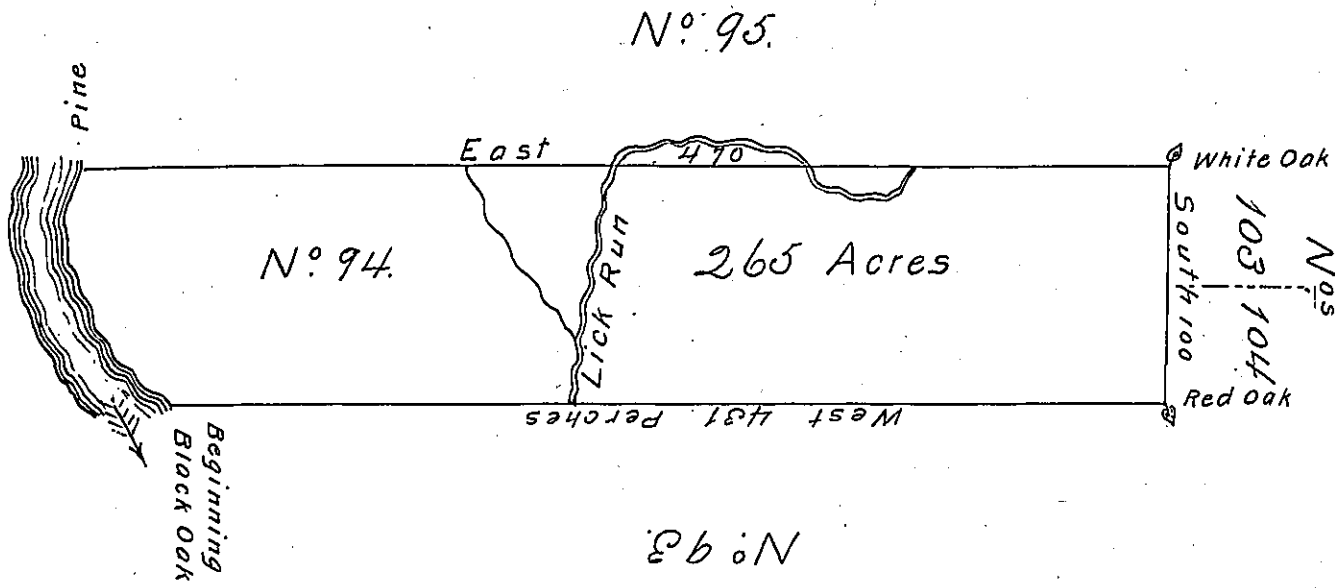




Courses Up the River from the Black Oak

- ↓ N 48 1/2 W 26
- ↓ N 31 1/2 W 46
- ↓ N 4 1/2 W 28
- N 24 1/2 E 23 Pine
- 123.



The above is a Draught of a Survey made in the month of May 1785 in Pursuance of Instructions from the Surveyor General Dated January 22^d 1785 Situate on the North Side of Ohio River on the east Bank of Beaver Creek & Lick Run in District No 2 Containing Two Hundred & Sixty Five Acres with the Allowance of 6 Per Cent

David Leet D^r

To

John Lukens Esq^r Sur^r Gen^r

IN TESTIMONY that the above is a copy of the original remaining on file in the Department of Internal Affairs of Pennsylvania, made conformably to an Act of Assembly approved the 16th day of February, 1833, I have hereunto set my Hand and caused the Seal of said Department to be affixed at Harrisburg, this seventh day of December 1903.

George P. Brown
Secretary of Internal Affairs.